

Centrifugal Oil Separator

Of the Chips to be Disposed, 30% is Usable Cutting Oil

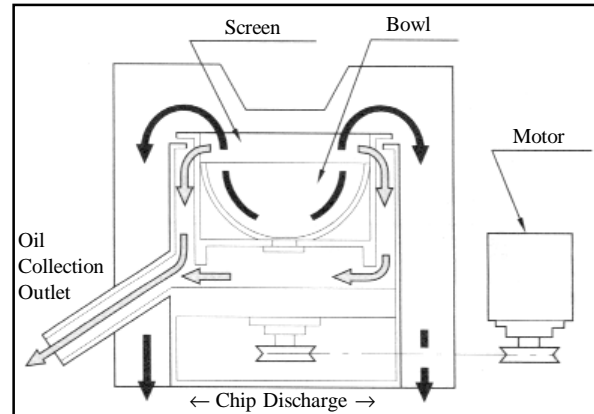
Centrifugal Oil Separator

Model O-150

Model O-230M

Compact, and Highly Efficient. Operator-Free, Continuous Type.

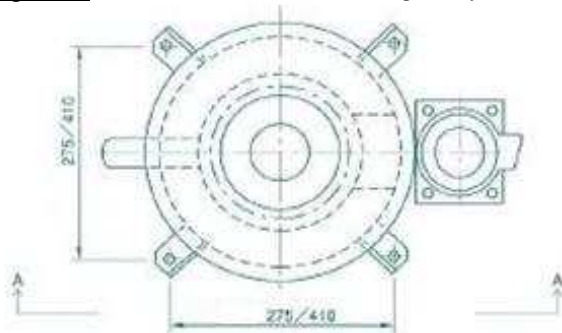
- As the interior of the basket is bowl shape, the continuous operation of supply, separation and discharge is possible, and a large volume can be processed in a short time.
- The machine construction allows for screen cleaning.
- Combined with a small size crusher, many types of chips can be processed at a high level of separation efficiency.
- Low noise and low vibration levels improve work environment.



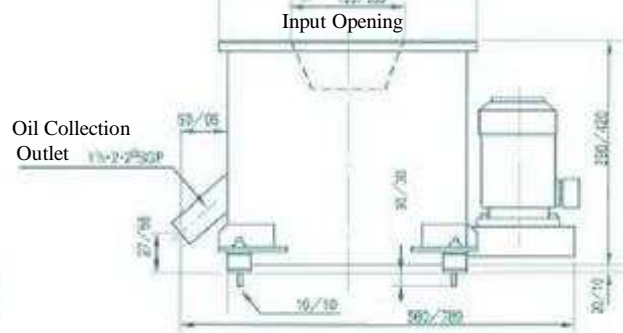
Optional

Stand • Casters/On • Off Switch/
Motor Cover/Electrical Wiring/Hose/Hopper

Top View (Dimensions are for O-150, 230, respectively)



A~A Side View



Model	Processing Volume	Bowl RPM	Motor	Bowl I.D.	Residue as a Percentage of Weight	Weight
O-150	~ 75ℓ/H	2860rpm	0.4kW/200V (50/60Hz)	150mm	1 ~ 5%	70kg
O-230M	~ 150ℓ/H	2300rpm	0.4kW/200V (50/60Hz)	235mm	1 ~ 5%	120kg

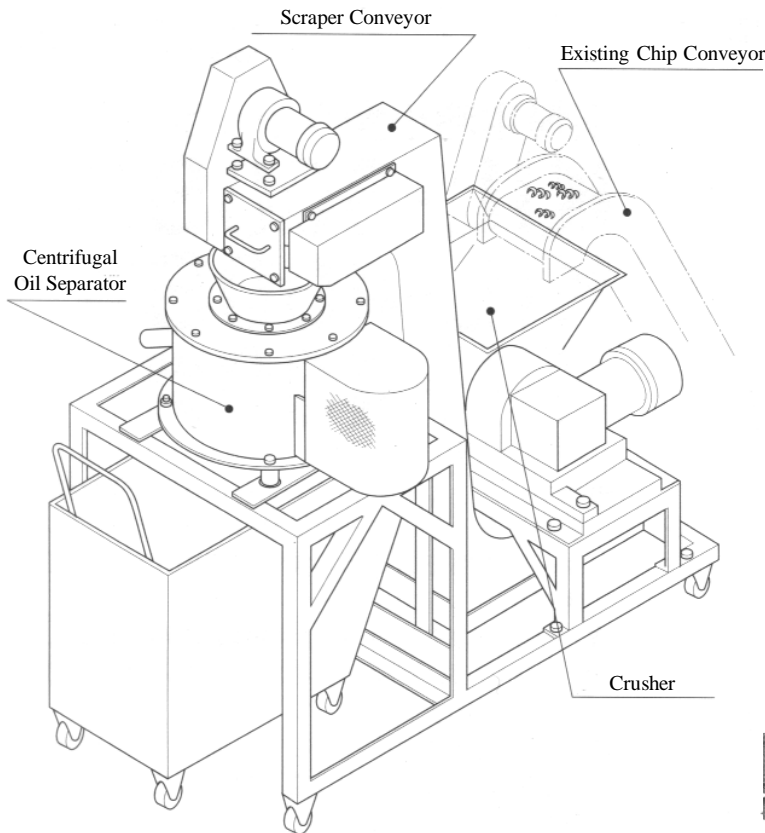
- Processed volume and residual oil rate are different depending on the chip quality and shape. Please contact our office for detailed information.
- Foreign objects can not be inserted.
- In order for the equipment to operate at maximum capability, please do not input in bulk but at a constant rate.
- The O-100 can handle chips up to 5mm in length. The O-150 and the O-230 can handle chips up to 30mm in length.

**Note of Caution**

To use correctly, please read the Operators Manual before use.

Reduce Chip Storage and Recycle Cutting Oil

Package Chip Processed Equipment - Model CKO



The closer chip processing is to where chips are generated, the better the results.

- This compact type simultaneously crushes and separates oil from the discharged chips.
- Factory can be kept neater, as the CKO can be placed with various chip generating machines.
- As the equipment is compact and rolls on casters, it can be moved easily.
- Oil adhering to chips is discharged and can be recycled.

A Package Chip Oil Separator ideal for the separation and conveying of the small chips of a gear cutting machine is also available.
 <Model MP + Model O>

**Optional**

Chip Box/Lower Chute/Insertion Hopper/Collected Oil Recycle Equipment

Model	Processing Volume	Crusher	Centrifugal Oil Separator	Conveyor	Weight
CKO-2	~150kg/Hr	C-120H (1.5kW)	O-230M (0.4kW)	KC-200(0.2kW)	450kg
CKO-3	~100kg/Hr	KIL-400A (1.5kW)	O-230M (0.4kW)	KC-200(0.2kW)	500kg
CKO-4	~150kg/Hr	C-120HW (1.5kW)	O-230M (0.4kW)	KC-200(0.2kW)	480kg
CKO-5	~75kg/Hr	KIL-300S (0.75kW)	O-150 (0.4kW)	KC-200(0.2kW)	350kg
CKO-6	~75kg/Hr	KIL-400S (0.75kW)	O-150 (0.4kW)	KC-200(0.2kW)	360kg

Processing volume and input volume conditions vary depending on the type and shape of the chips. Please contact our office for details.

We reserve the right to make changes to machine specifications without prior notice.

Sumitomo Heavy Industries Finetech, Ltd.

8230 Tamashima, Otoshima, Kurashiki-Shi
 Okayama 713-8501 JAPAN
 TEL 81-86-525-6281 FAX 81-86-525-6255
 Internet: www.shi-ftec.co.jp